

whatnot

RASHIDA COLEMAN♥HALE

TURN ON SOUND ↑

whatnot

RASHIDA COLEMAN ♥ HALE

A little of this, a little of that - Whatnot by Rashida Coleman-Hale is a playful look at the objects we see around us every day. To-do lists, toothbrushes, scissors, phones, what else can you spot? If only the real things were this cute. Rashida's gorgeous Brushwork print is back in a smaller scale for cotton and a larger for rayon, and a new metallic colorway of her Zip! basic rounds out the collection.

OCTOBER DELIVERY

- 19 premium 100% Ruby Star Cotton prints
- 2 Rayon prints
- 3 108" premium Cotton Sateen prints

RS1012



Assortments and precuts do not include rayons or 108" backings.

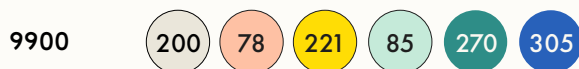
SUGGESTED SPECKLED COORDINATES & COMPLEMENTS



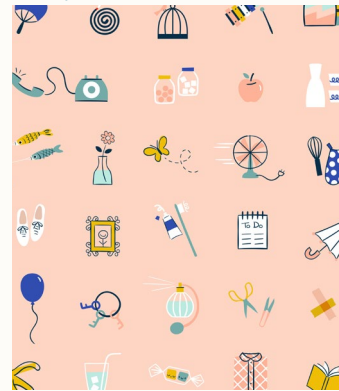
SUGGESTED ZIP! COORDINATES & COMPLEMENTS



SUGGESTED MODA BELLA SOLID COORDINATES & COMPLEMENTS



STUFF | PALE PEACH



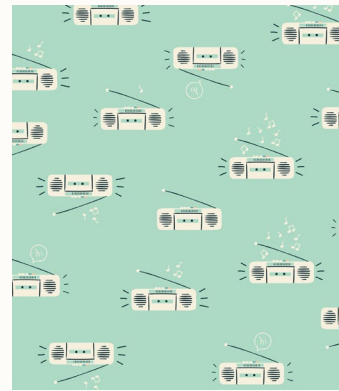
RS1012-13

STUFF | SHELL



RS1012-14

BOOM | FROST



RS1013-17

BRUSHA BRUSHA | PEACH



RS1014-11

POTTED | GOLDENROD



RS1015-14M

POTTED | POLAR



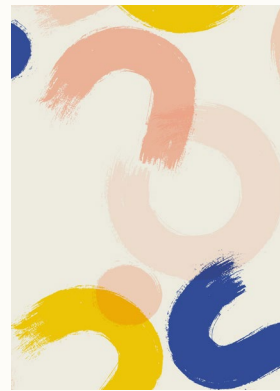
RS1015-17M

ZIP | FROST



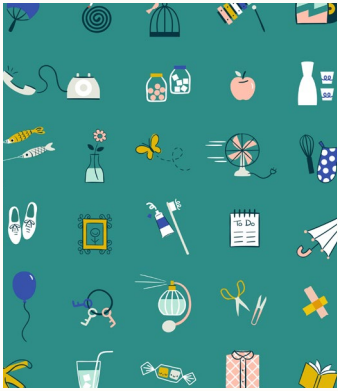
RS1005-37M

BRUSHWORK RAYON | SHELL



RS1017-11R

STUFF | SUCCULENT



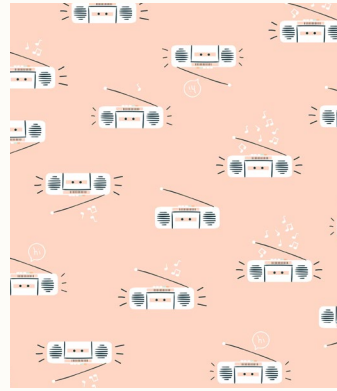
RS1012-15

STUFF | BLUE RIBBON



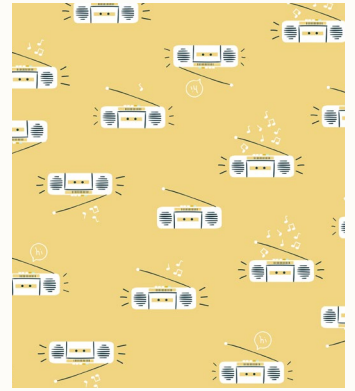
RS1012-16

BOOM | PALE PEACH



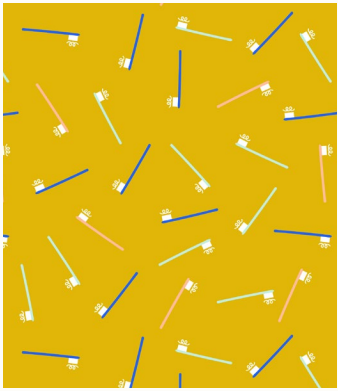
RS1013-11

BOOM | SAND



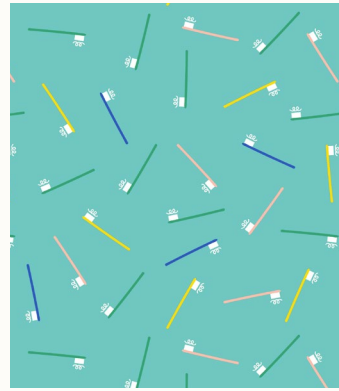
RS1013-14

BRUSHA BRUSHA | GOLDENROD



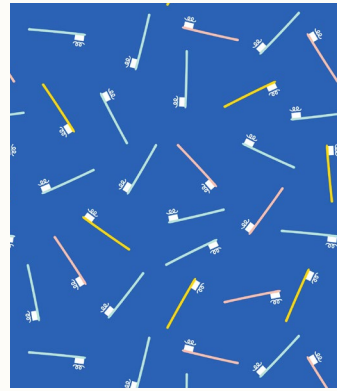
RS1014-12

BRUSHA BRUSHA | TURQUOISE



RS1014-13

BRUSHA BRUSHA | BLUE RIBBON



RS1014-14

POTTED | PEACH



RS1015-12M

POTTED | EMERALD GREEN



RS1015-19M

BRUSHWORK | SHELL



RS1016-11

BRUSHWORK | GOLDENROD



RS1016-12

BRUSHWORK | BLUE RIBBON



RS1016-13

BRUSHWORK RAYON | TEAL NAVY



RS1017-13R

whatnot

RASHIDA COLEMAN♥HALE

For the first time ever Ruby Star Society is offering 108" quilt backings! These three colors of Rashida Coleman-Hale's Hana design are printed on luxuriously soft and silky cotton sateen.

OCTOBER DELIVERY

3 premium 108" cotton sateens

- A. RS11171-11 HANA WIDEBACK | PEACH
- B. RS11171-12 HANA WIDEBACK | GOLDENROD
- C. RS11171-13 HANA WIDEBACK | BLUE RIBBON





BY STAR SOCIETY ★

© RASHIDA COLEMAN@HALE

@rashida_coleman_hale

whatnot

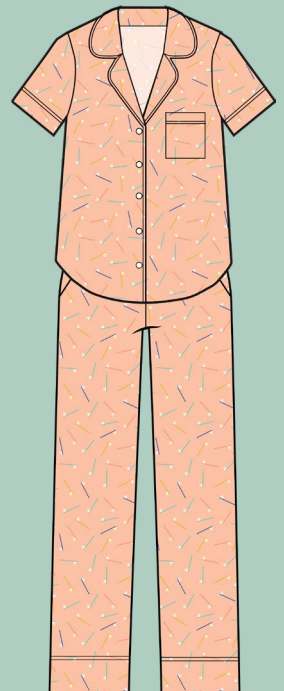
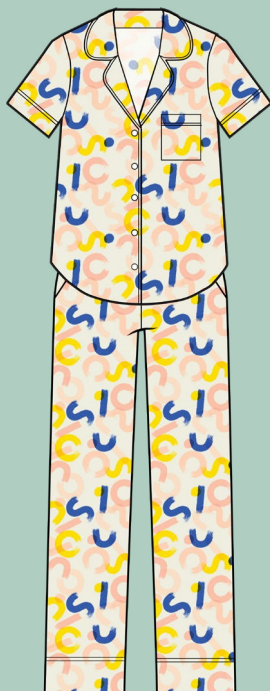
A

108"
WIDE
FABRICS



PP 109
Patchwork & Poodles
Inking
48" x 60"
(see photo at right)

CC 04
Closet Case Patterns
Carolyn Pajamas







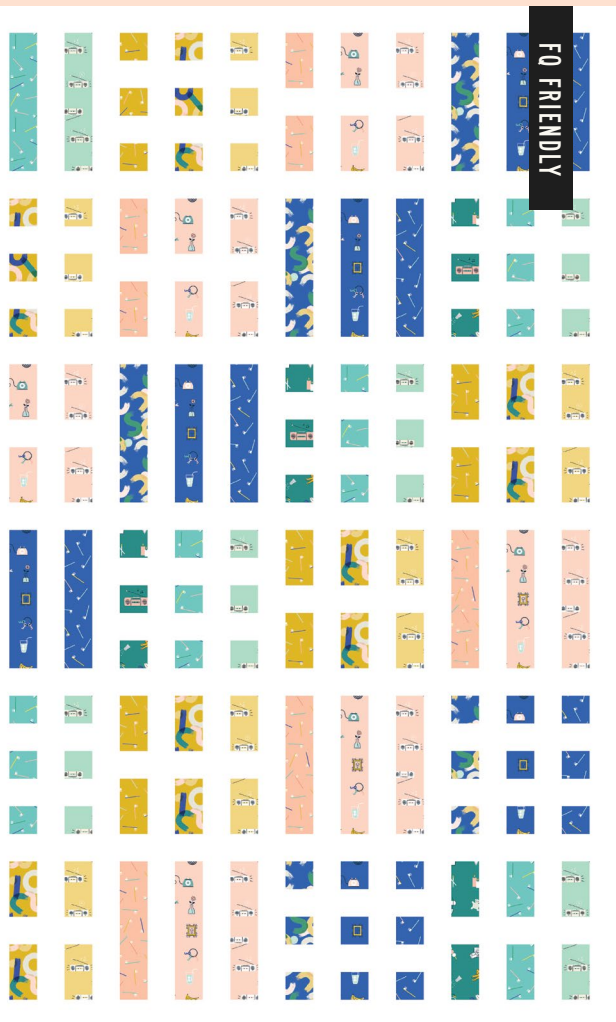
CJ 110 Cotton + Joy - Midpoint

58" x 73"



MH 012 Modern Hand





craft - Dot + Dash

63" x 74"



QL 135 Quilty Love Flying

62" x 72"



LST 133
Sallie Tomato
Ferris
HARDWARE KIT
AVAILABLE - LST133G

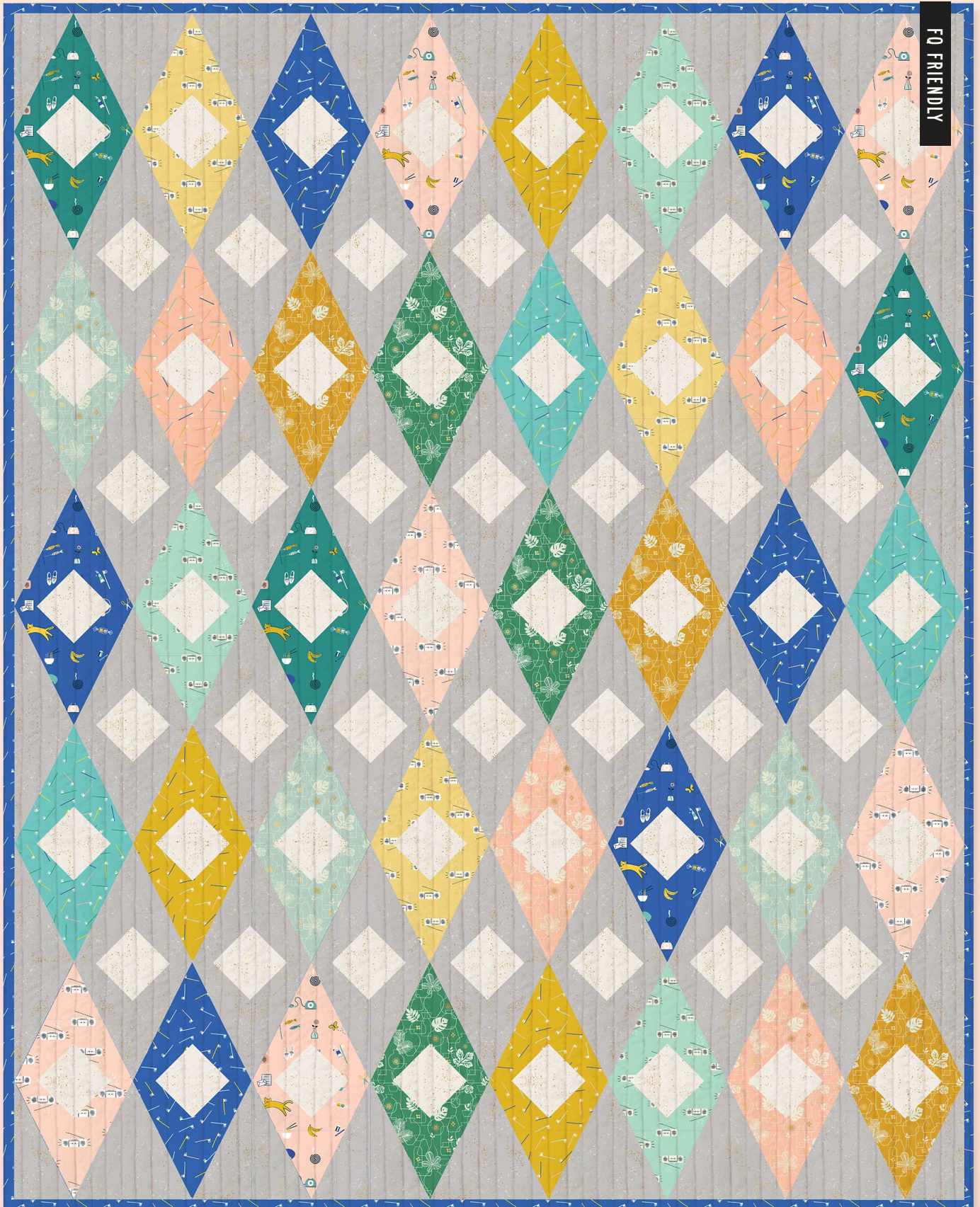




QL 135

Quily Love - Flying
(shown on page 37)
photo by Emily Dennis

FQ FRIENDLY



KAT 109 Knot and Thread Design - Wylie's Way

64" x 80"