



Badda Bing!

Have a cherry-on-top kind of day!

Me & My Sister Designs

MMS 180531 / MMS 180531G
Country Market Size: 60" x 72"



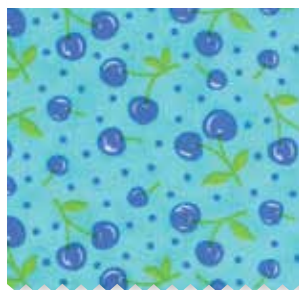
The only thing quilters love more than polka dots are cherries! This cheery cherries mix with polka dots and hand-drawn flowers with prints inspired by vintage feed sacks. A little bit of gingham, a splash of orange and Badda Bing... this is better than a sundae with a cherry on top!

More patterns, yardage, and pre-cuts available this **August 2018**.

modafabrics.com

© 2018 moda fabrics • all rights reserved

22342 14



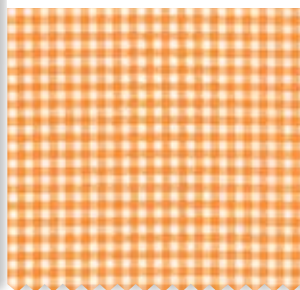
22341 26



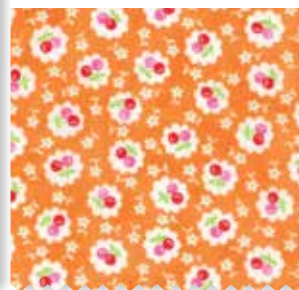
22347 14 *



22345 17



22347 17



22341 15 *



22345 14 *



22344 14



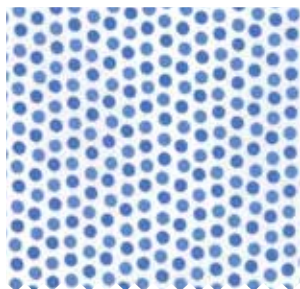
22346 14 *



22345 15



22343 27 *



22346 15 *



22344 15 *



22347 15



