

NOMAD



URBAN CHIKS

Size: 54"x61"



moda

moda

Quilter's Basics

Read instructions before beginning a project.
All instructions include a 1/4" seam allowance.
Press as you go. Press seams in one direction



Size: 54"x61"

URBAN CHIKS

Cutting

With the exception of the paper pieced units 3 fabrics listed below pieces for this quilt are cut from templates. Refer to the Template Cutting Chart below for the number of each template to cut from Fabrics 1-31.

Fabric 1

Cut 1 – 1½"xWOF strip for arrow shaft. Use remaining fabric for paper piecing and templates.

Fabric 8

Cut 6 – 2½"xWOF strips for binding. Use remaining fabric for templates.

Fabric 31

Cut 2 – 3"xWOF strips for arrow shaft background. Use remaining fabric for paper piecing and templates.

Template Cutting Chart

Cut all templates on a **double fold of fabric**, right sides together, to get two pieces: a left and a right.

Example: Cut 2 will yield 4 pieces, 2 left and 2 right, Cut 3 will yield 6 pieces, and so on.

Label pieces as they are cut with fabric number and template letter.

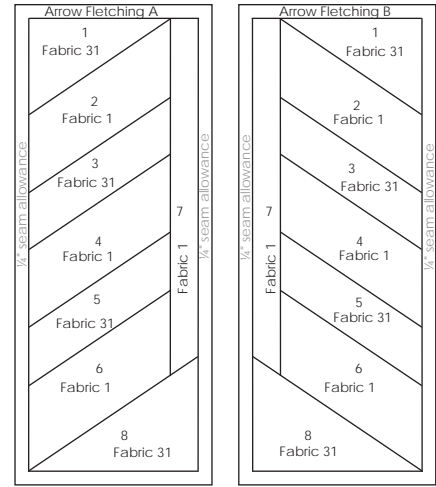
Template	A	B	C	D	E	F	G	H
Fabric 1								5
Fabric 2			2	2	2			
Fabric 3			1		3		3	
Fabric 4			2		3		3	
Fabric 5			3				3	
Fabric 6			1				3	1
Fabric 7			9					
Fabric 8					1		3	
Fabric 9	2		2					
Fabric 10			4					
Fabric 11							4	
Fabric 12			4					2
Fabric 13			2		4			
Fabric 14		2						
Fabric 15			4				2	
Fabric 16							2	

Template	A	B	C	D	E	F	G	H
Fabric 17			2					
Fabric 18								2
Fabric 19			1					2
Fabric 20			8					
Fabric 21			2				1	
Fabric 22			3				1	
Fabric 23				2	3			
Fabric 24							2	
Fabric 25			1					2
Fabric 26			4					2
Fabric 27			2		2		2	
Fabric 28					2			
Fabric 29			4				1	2
Fabric 30					2		4	
Fabric 31	2	2	12	14	7	5	3	2


Construction

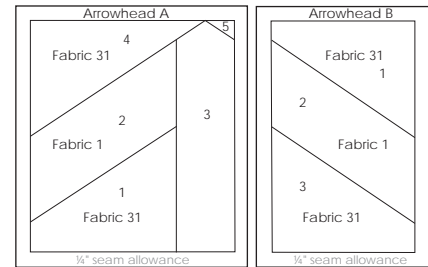
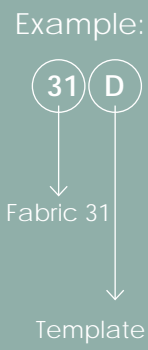
1. Sew the 1½" x WOF Fabric 1 strip between the two 3" x WOF Fabric 31 strips to make a strip set for the arrow shaft. Set aside.
2. Using Fabrics 1 and 31 and the foundation patterns on pages 6 and 8, paper piece the A and B block units for the Arrowhead and Fletching Blocks. Sew the units together to complete the blocks. Trim the blocks and remove the papers.

Arrowhead should measure 4½" x 6½" with seams.
 The Fletching should measure 8½" x 6½" with seams.



Quilt Layout Chart

Column	1	2	3	4	5	6	7	8	9
Fabric Number and Template Number	1H	18H	25H	26H	6H	18H	19H	26H	1H
	2E	9C	24G	27E	8E	9C	20C	27E	2E
	3G	10C	23D	28E	4G	10C	22C	28E	3G
	4G	31D	20C	31C	3G	31D	31D	31C	4G
	31F	11G	22C	27G	31F	11G	21G	30G	31F
	5C	12C	31E	31F	6C	12C	31A	31F	5C
	6G	31B	21C	29C	8G	31B	25C	29C	6G
	4C	13C	20C	30G	5C	13C	20C	27G	4C
	31D	31D	31H	15C	31D	31D	31A	15C	31D
	2C	14B		31D	20C	14B	23D	31D	2C
	7C	15G		26C	7C	16G	22G	26C	7C
	3E	16G		31C	3E	15G	29G	31C	3E
	8G	13E		23E	5G	13E	31G	23E	5G
	2D	31C		30G	31D	31C	19C	30G	2D
	7C	10C		31D	7C	10C	31E	31D	7C
	31C	11G		26C	31C	11G	20C	26C	31C
4E	12C	31C		4E	12C	21C	31C	4E	
7C	31E	30E	7C	31E	31E	30E	7C		
31C	17C	27C	3C	17C	22C	27C	31C		
5G	15C	29C	6G	15C	20C	29C	8G		
1H	13E	31G	1H	13E	23E	31G	1H		
	31E	31H	29H		31E	24G	29H		
	9A	20C			9A	25H			
	12H	19H			12H				



moda

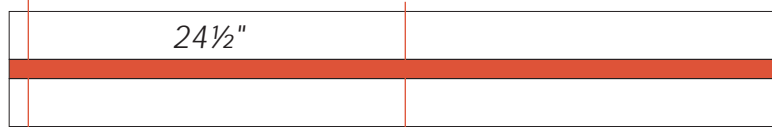
Piecing the Columns

1. Referring to the Quilt Layout Chart sew the left hand pieces for Column 1 together into a long column 3"x61½". The pieces are indicated by fabric number and template number. *For example, an area marked 1G will be Fabric 1, Template G.* Begin and end each column with an H piece. Press all the left seams down.
2. Stitch the right hand pieces for Column 1 together in the same order as the left, using the same chart. Press all the seams up. Match up the right and left hand columns and sew them together to complete Column 1. Press. *Note that some columns will point up and some down. Be sure to sew the pieces for each column together in the correct orientation.*
3. Repeat Steps 1 and 2 to piece Columns 1, 2, 4, 5, 6, 7, 8, and 9.

Piecing Column 3 – the arrow column

This column has several different parts: the top and bottom template pieced sections, the paper pieced arrowhead, the paper pieced fletching and the arrow shaft.

1. Referring to the chart on page 2 and the diagram on page 4, piece the template sections for the top and bottom of the column. Join the top template section and the arrowhead. Press.
2. Cut the Fabric 1 and Fabric 31 strip set to make an arrow shaft to measuring 24½". *Read SEAMS below before cutting arrow shaft*



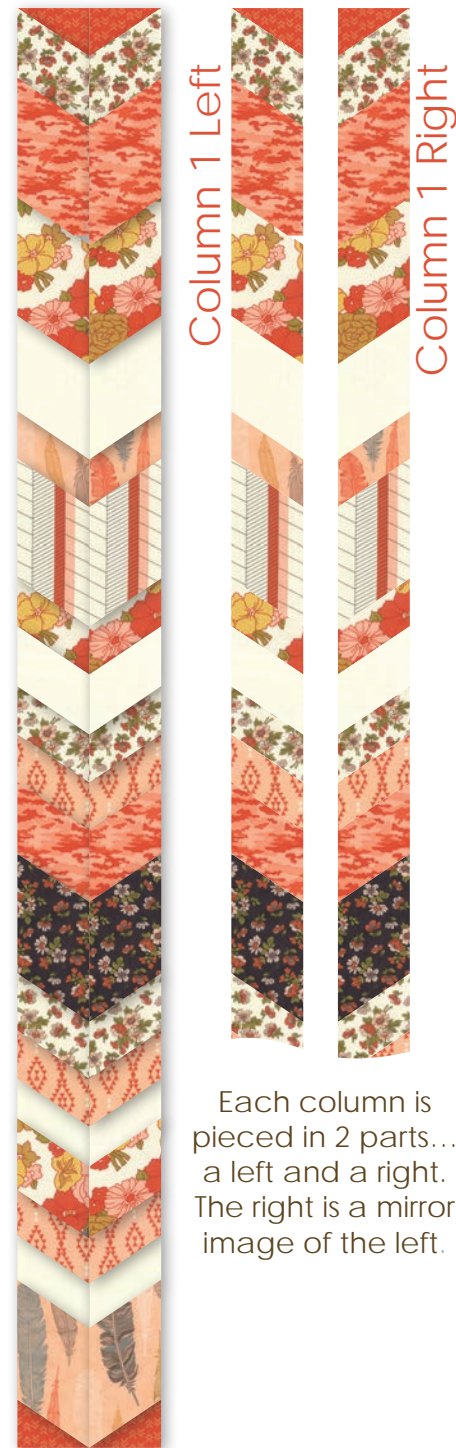
3. Join the the three sections to complete Column 3.

moda

Assemble the Quilt

1. Sew the columns together in numerical order. Columns 1, 4, 5, 8, 9 will point down, Columns 2, 3, 6, and 7 will point up. *Note: Due to the nature of the design, the seams will not always line up horizontally from column to column.*

Column 1 Each column should measure 6½"x60½" with seams.



Each column is pieced in 2 parts... a left and a right. The right is a mirror image of the left.

SEAMS

Check your seam allowance as you stitch template pieces together. The seam allowance needs to be consistent as you are sewing multiple seams in one column. Stitch the left side of Column 1 together and measure the length. It should measure approximately 3½"x 61½" with seams. Make sure each column is the same length as you sew. If they are not exactly 61½" long, you'll need to cut the arrow shaft a bit longer or shorter as needed.

Assemble the Quilt – cont.



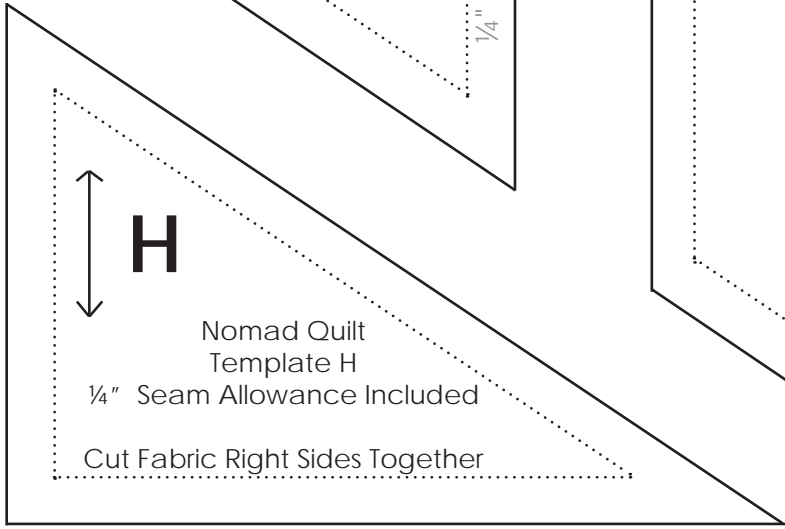
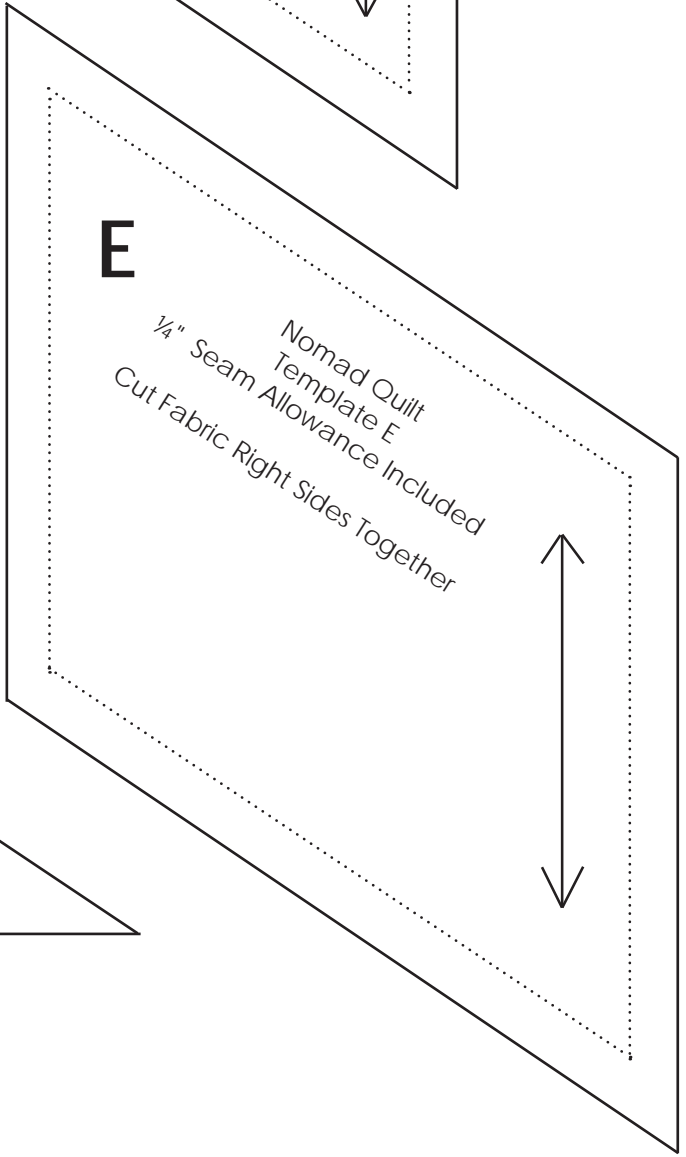
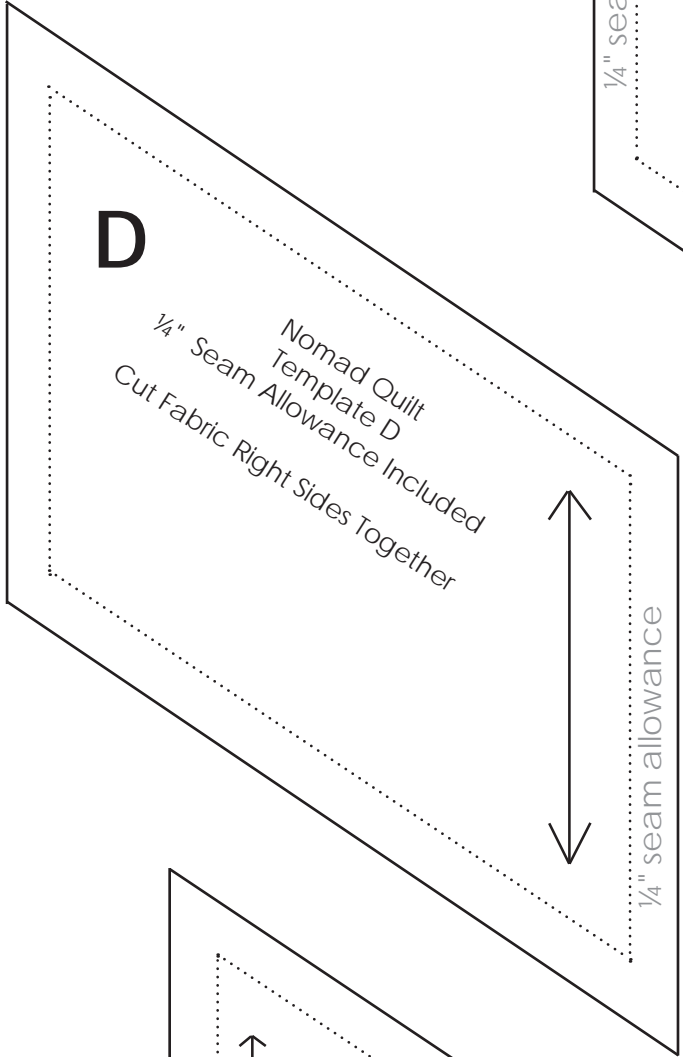
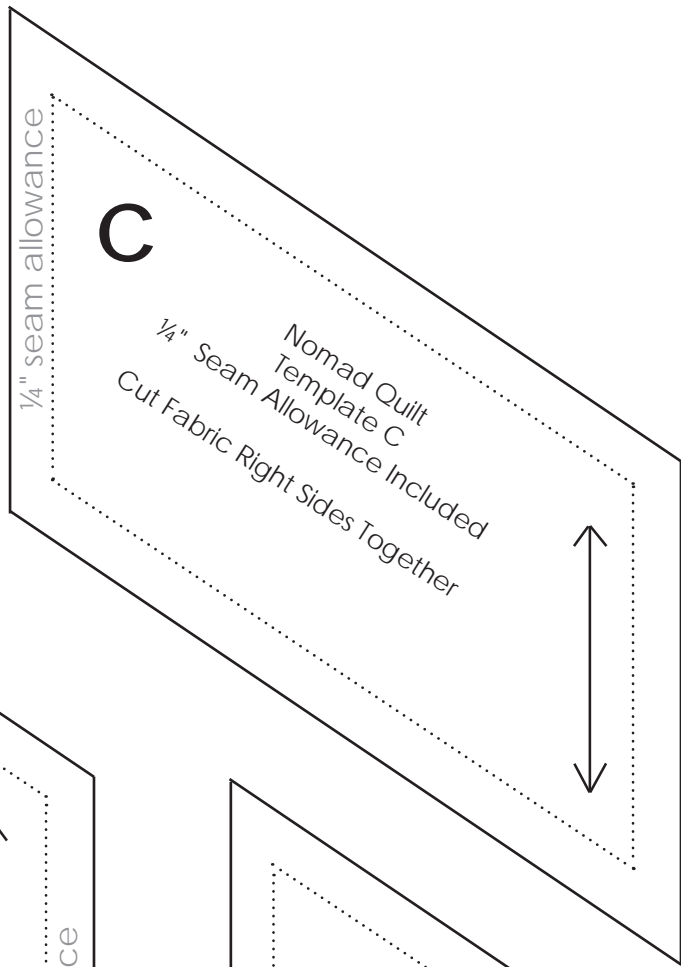
Quilt top should measure 54½"x61½" with seams

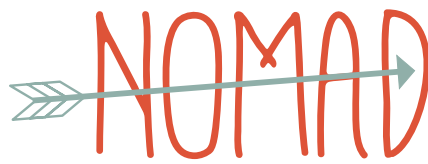
Finishing

Using a diagonal seam, join the 6 – 2½"xWOF Fabric 8 strips end to end. Press seams open. Fold prepared strip in half wrong sides together and press to make the binding.

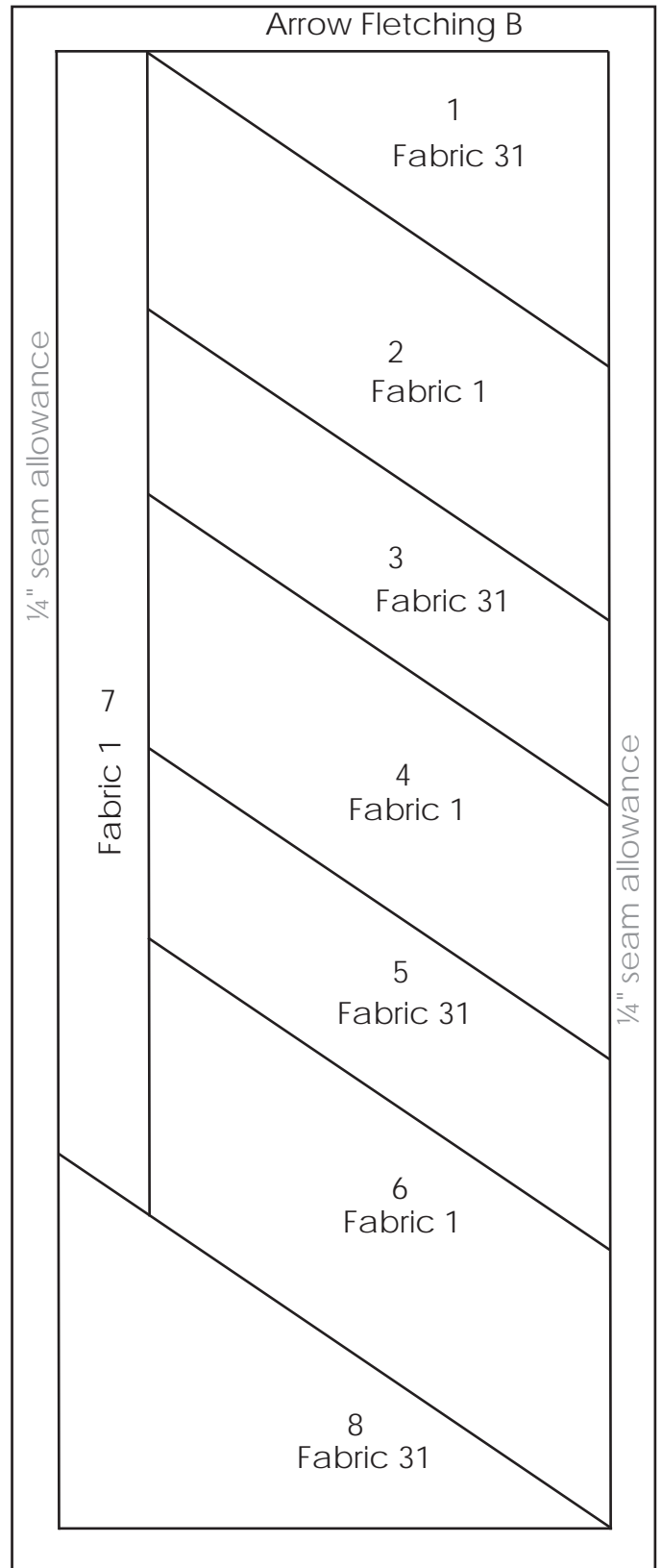
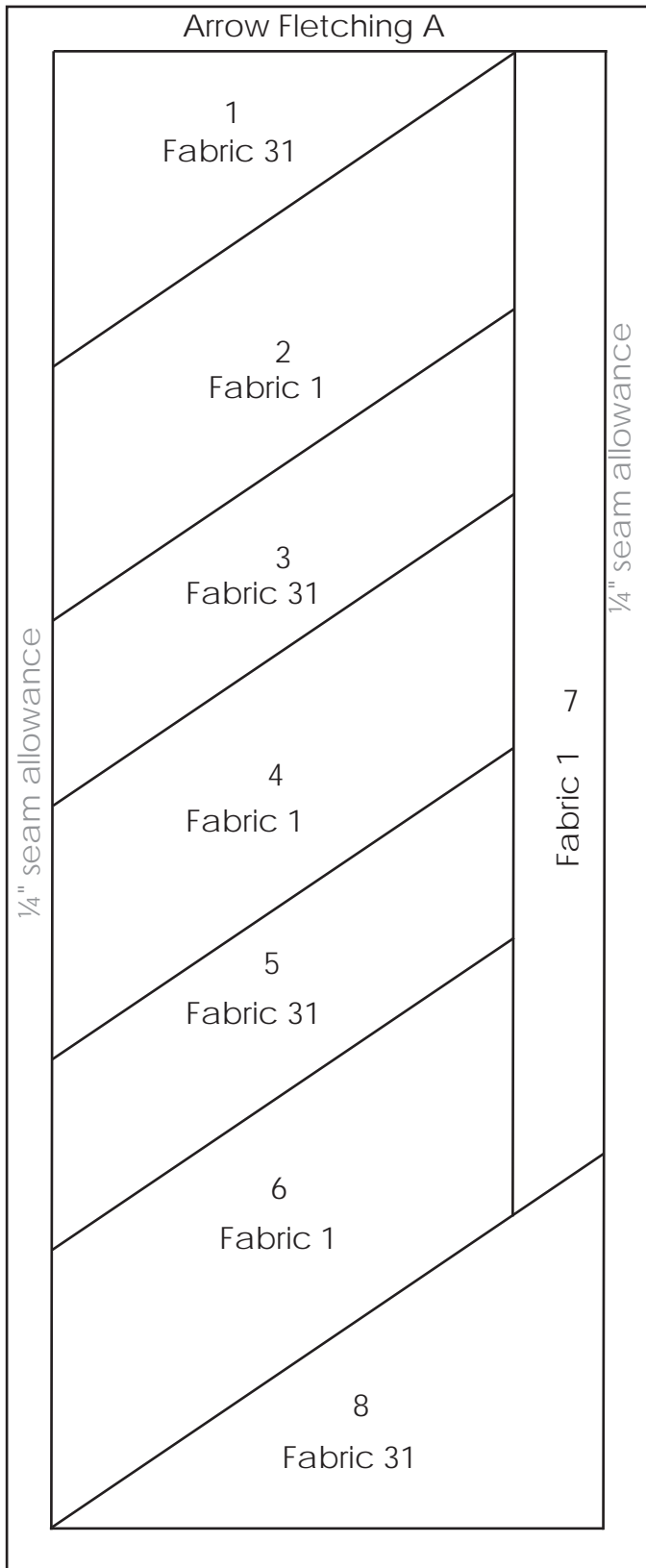
Layer, Quilt and Bind.

moda



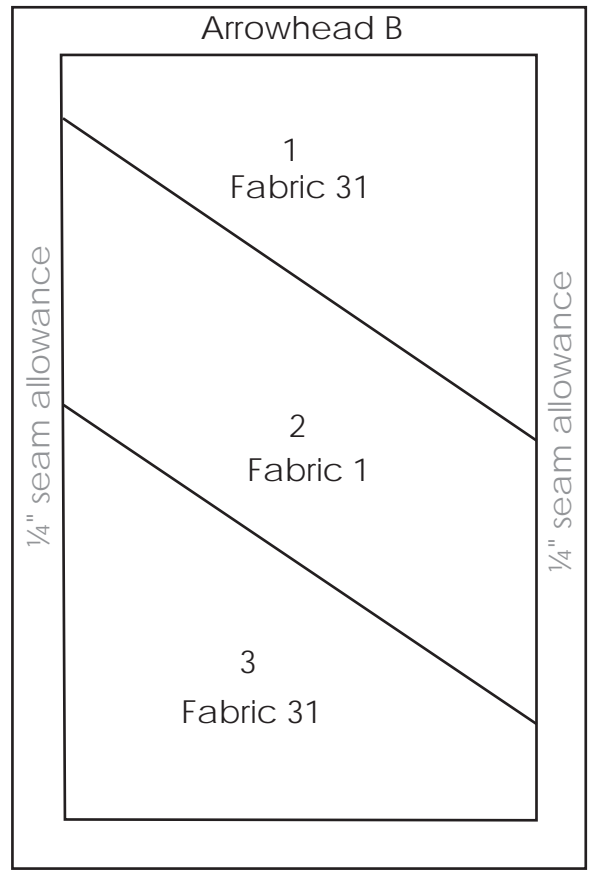
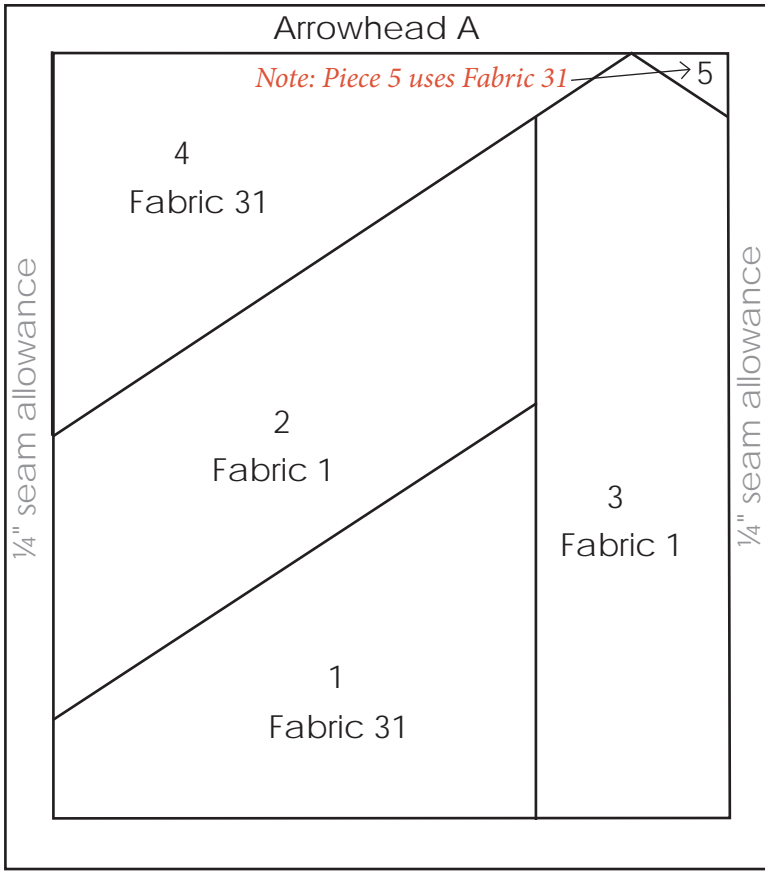


foundation patterns

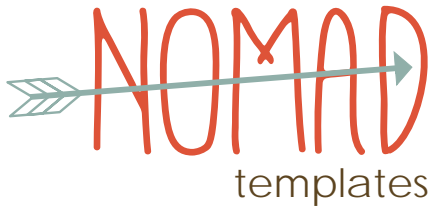


Nomad Quilt Arrow Fletching Foundations
Make 1 copy of each

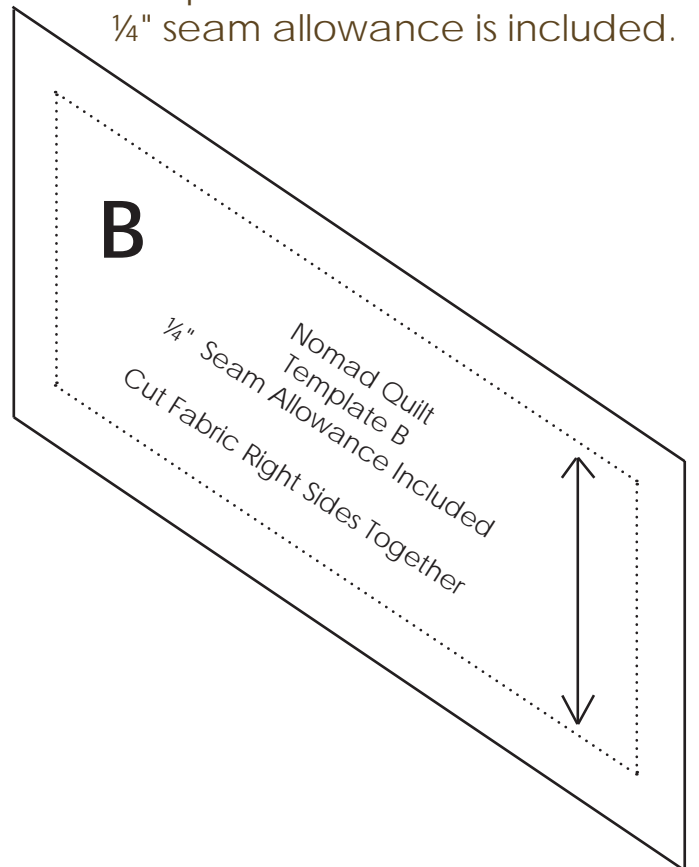
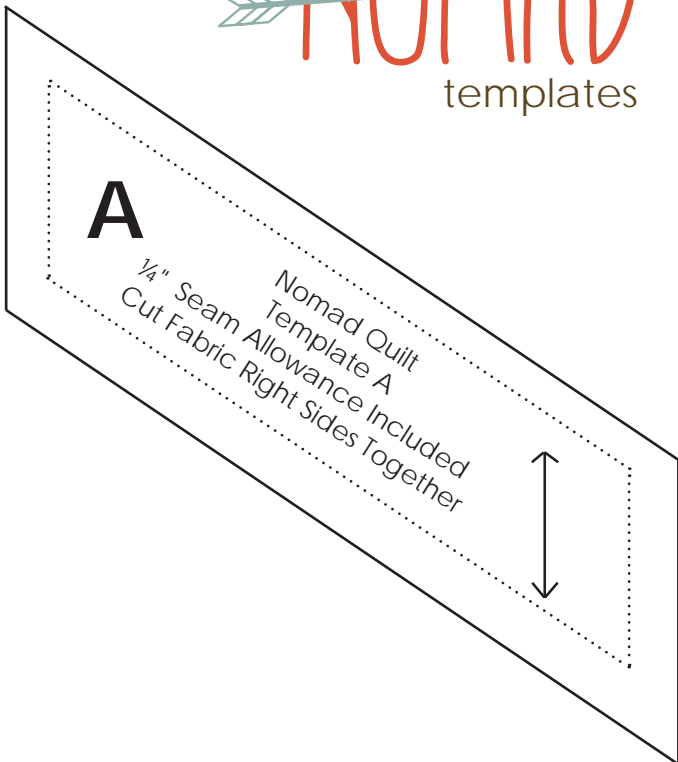
This page left blank for paper piecing



Nomad Quilt Arrowhead Foundation
Make 1 copy of each



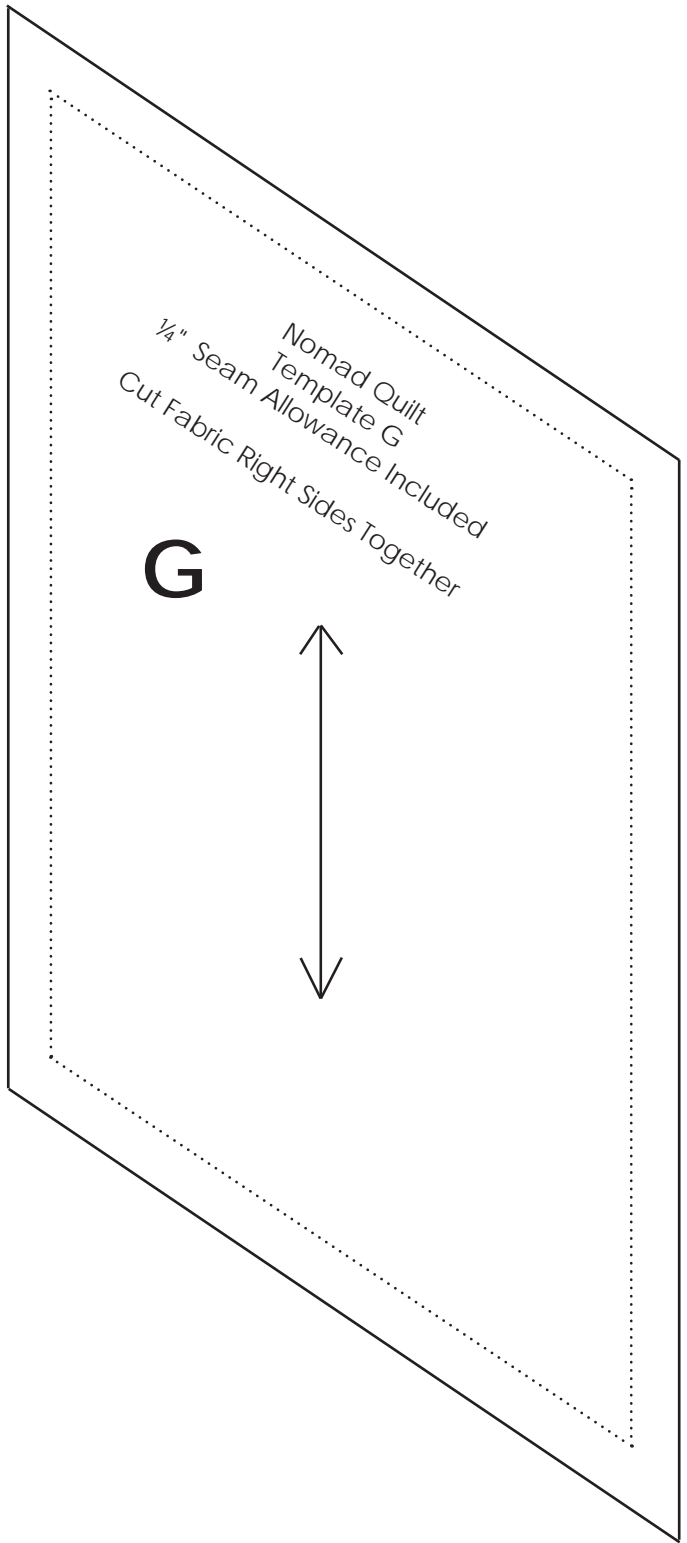
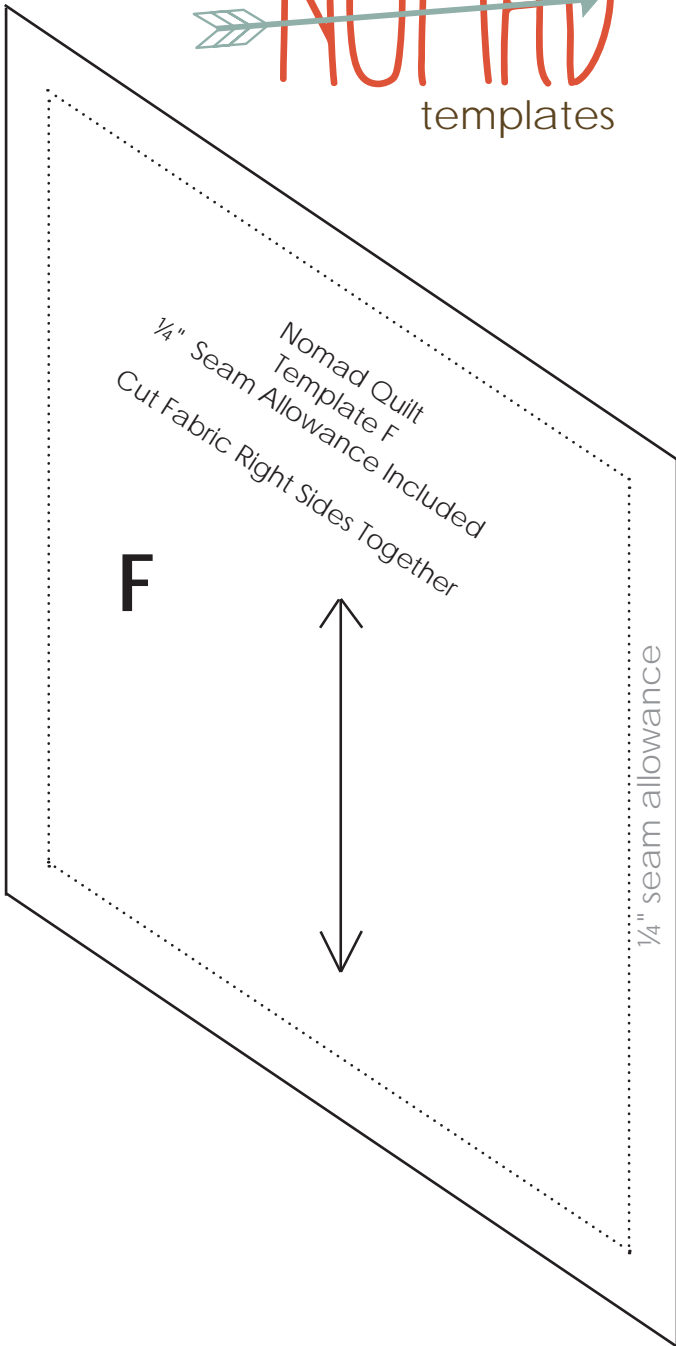
Templates are full sized.
1/4" seam allowance is included.



This page left blank for paper piecing

NOMAD

templates



Templates are full sized.
1/4" seam allowance is included.

moda

NOMAD

Size: 54"x61"

Skill Level: Intermediate

URBAN CHIKS

Fabric Requirements

1 fat quarter bundle of *Nomad* by Urban Chiks

Additional Yardage

Fabric 1 - ¼ yard of print 31106-13 for Arrow

Fabric 3 - ¼ yard of print 31105-14 for blocks

Fabric 8 - ⅝ yard of print 31104-21 for binding

Fabric 17 - ¼ yard of Bella 9900-109 for blocks

Fabric 19 - ¼ yard of Bella 9900-275 for blocks

Fabric 30 - ¼ yard of print 31103-11 for blocks

Fabric 31 - 2 yards of print 31106-41 for bkgd pieces

Backing 3½ yards

Fabric Key

Note: Fabrics marked in orange have additional yardage.

Fabrics marked in black are from the fat quarter bundle.

Fabric 1



31106-13

Fabric 2



31104-11

Fabric 3



31105-14

Fabric 4



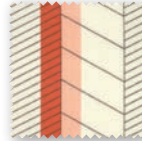
31100-11

Fabric 5



31101-14

Fabric 6



31102-13

Fabric 7



31103-14

Fabric 8



31104-21

Fabric 9



31106-20

Fabric 10



31100-18

Fabric 11



31103-18

Fabric 12



31106-21

Fabric 13



31104-41

Fabric 14



31105-18

Fabric 15



31104-31

Fabric 16



31101-18

Fabric 17



9900-109

Fabric 18



31102-18

Fabric 19



9900-275

Fabric 20



31106-31

Fabric 21



31101-11

Fabric 22



31105-16

Fabric 23



31100-21

Fabric 24



31103-31

Fabric 25



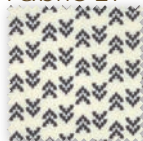
31106-17

Fabric 26



31103-21

Fabric 27



31106-11

Fabric 28



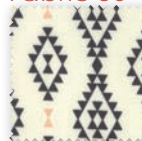
31101-21

Fabric 29



31102-11

Fabric 30



31103-11

Fabric 31



31106-41

moda

MODAFABRICS.COM

PS31100 — SUGGESTED RETAIL \$6.00