

ZIG ZAG QUILT
moda

Bella
SolidsTM

ZIG ZAG QUILT (VERTICAL)

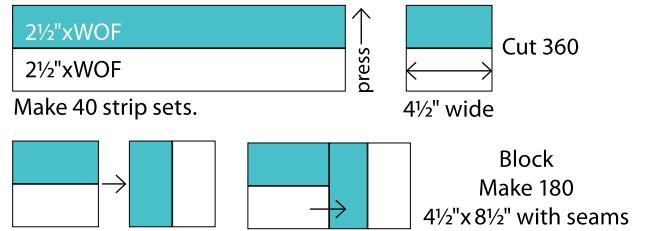
Size: 71" x 82"

Read instructions before beginning a project. All instructions include a 1/4" seam allowance WOF=width of fabric.

Quilt Construction

1 Blocks: Sew the Zig Zag and Background Jelly Roll™ strips into 40 strip sets. Cut 9-4 1/2" wide units from each strip set (360 total units). See diagram on right. Combine 2 units to make a Block. Make a total of 180 Blocks, 4 1/2" x 8 1/2" with seams.

2 Quilt top: Sew the Blocks and 5" x 5" Charm Pack™ squares into rows. Note placement of charm squares at ends of rows—Rows 2-13 charm on the right, Rows 16-27 charm on the left. Rows 14 & 15 have charms on both ends. Trim charm squares to match block. See below. Combine the rows. Refer to diagram below for placement.

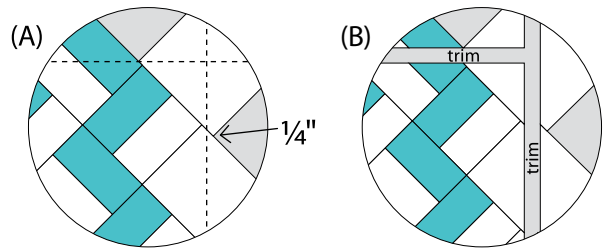
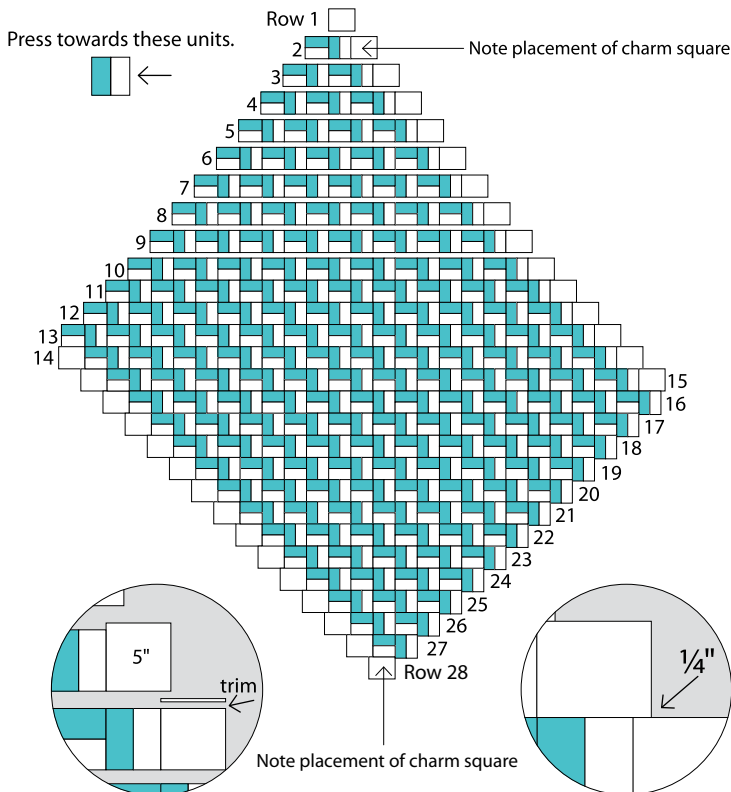
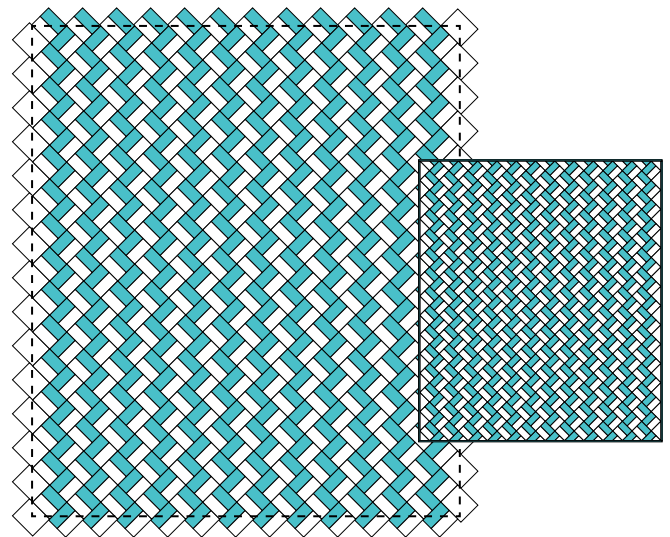


Rows	Blocks	5" Bkgds
1, 28	0	1
2, 27	1	1
3, 26	2	1
4, 25	3	1
5, 24	4	1
6, 23	5	1
7, 22	6	1

Rows	Blocks	5" Bkgds
8, 21	7	1
9, 20	8	1
10, 19	9	1
11, 18	10	1
12, 17	11	1
13, 16	12	1
14, 15	12	2

3 Trim the Quilt top:

- (A) Trim the top and bottom of the quilt where the Blocks meet as shown.
- (B) Trim the sides of the quilt 1/4" away from the Block intersection as shown.



4 Sew the 8-2 1/2" x WOF Binding strips together. Layer, quilt and bind. ENJOY!

Tip: The Charm Pack™ squares are oversized. Trim the top of square even with the Blocks after assembling the row. When you sew the rows together there will be a nice 1/4" intersection.

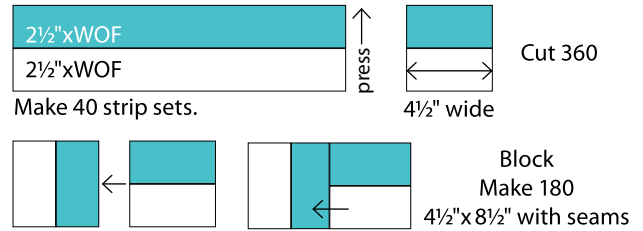
ZIG ZAG QUILT (HORIZONTAL)

Size: 65"x88"

Bella *moda* Solids™

Quilt Construction

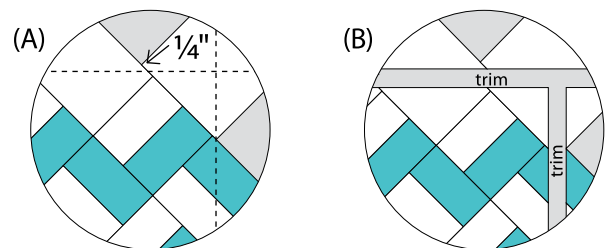
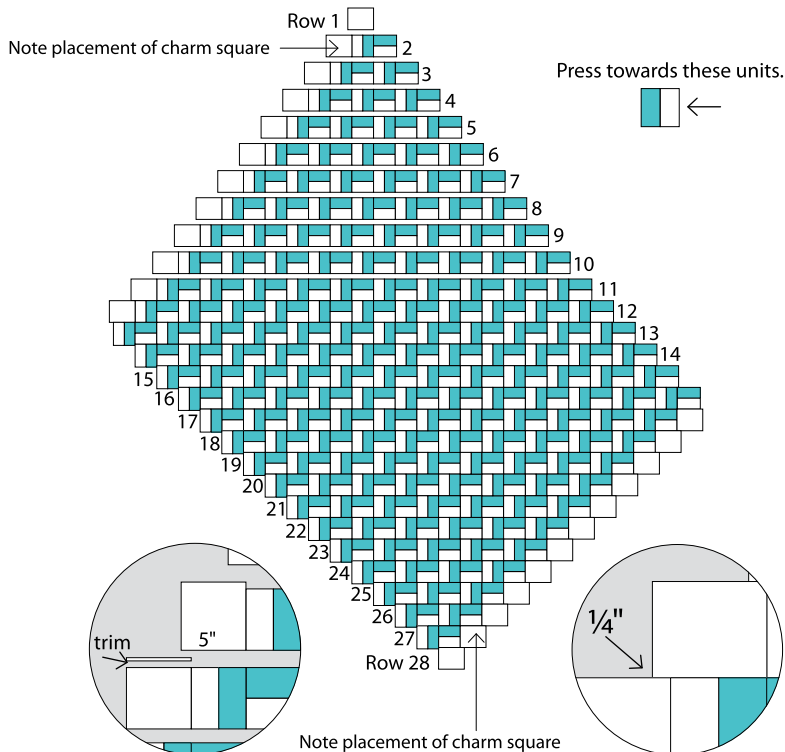
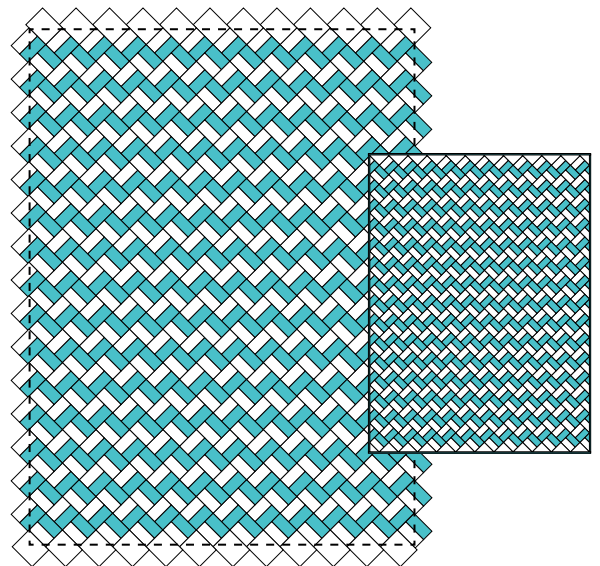
1 Blocks: Sew the Zig Zag and Background Jelly Roll™ strips into 40 strip sets. Cut 9–4½" wide units from *each* strip set (360 total units). See *diagram on right*. Combine 2 units to make a Block. Make a total of 180 Blocks, 4½"x 8½" with seams.



2 Quilt top: Sew the Blocks and 5"x5" Charm Pack™ squares into rows. Note placement of charm squares at ends of rows—Rows 2-12 charm on the left, Rows 17-27 charm on the right. Rows 13, 14, 15 & 16 have no charms. Trim charm squares to match block. See below. Combine the rows. Refer to *diagram below for placement*.

3 Trim the Quilt top:
(A) Trim the top and bottom ¼" away from the Block intersection as shown.
(B) Trim the sides of the quilt where the Blocks meet as shown.

Rows	Blocks	5" Bkgds	Rows	Blocks	5" Bkgds
1, 28	0	1	8, 21	7	1
2, 27	1	1	9, 20	8	1
3, 26	2	1	10, 19	9	1
4, 25	3	1	11, 18	10	1
5, 24	4	1	12, 17	11	1
6, 23	5	1	13, 14, 15, 16	12	0
7, 22	6	1			



4 Sew the 8–2½"xWOF Binding strips together. Layer, quilt and bind. ENJOY!

Tip: The Charm Pack™ squares are oversized. Trim the top of square even with the Blocks after assembling the row. When you sew the rows together there will be a nice ¼" intersection.

moda

moda Bella Solids™

ZIG ZAG QUILT (VERTICAL)

Size: 71"x82"

or

ZIG ZAG QUILT (HORIZONTAL)

Size: 65"x88"

Fabric Requirements

2 Bella Solid Jelly Rolls™: 1 for the Zig Zag
(or 40-2½"x WOF strips)
1 for the Background
(or 40-2½"x WOF strips)

1 Charm Pack™: match the Background
(or 30-5"x5" squares)

Binding: ¾ yard

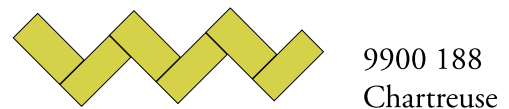
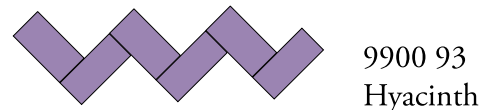
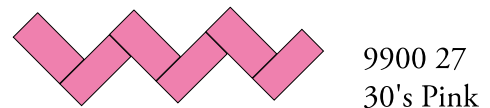
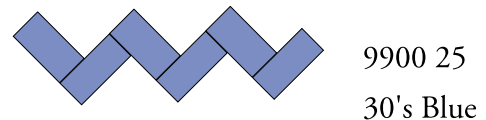
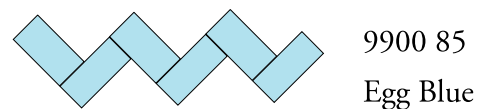
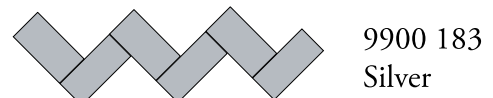
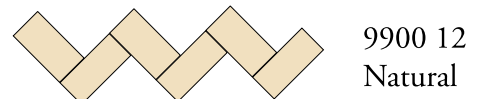
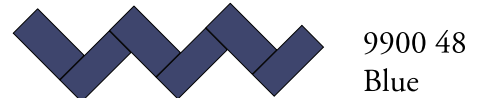
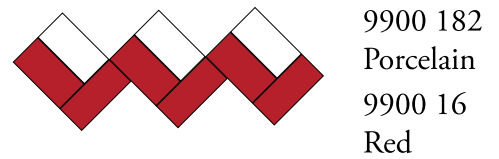
Backing: 5 yards

Cutting

Binding: 8-2½"x WOF strips

*Special thanks to
Amanda Jean Nyberg
at
crazymomquilts.blogspot.com
for this easy construction technique!*

Bella Solid JellyRoll™ Precuts:



pattern directions by Lisa Christensen

Visit our website for more Bella Solid Precuts